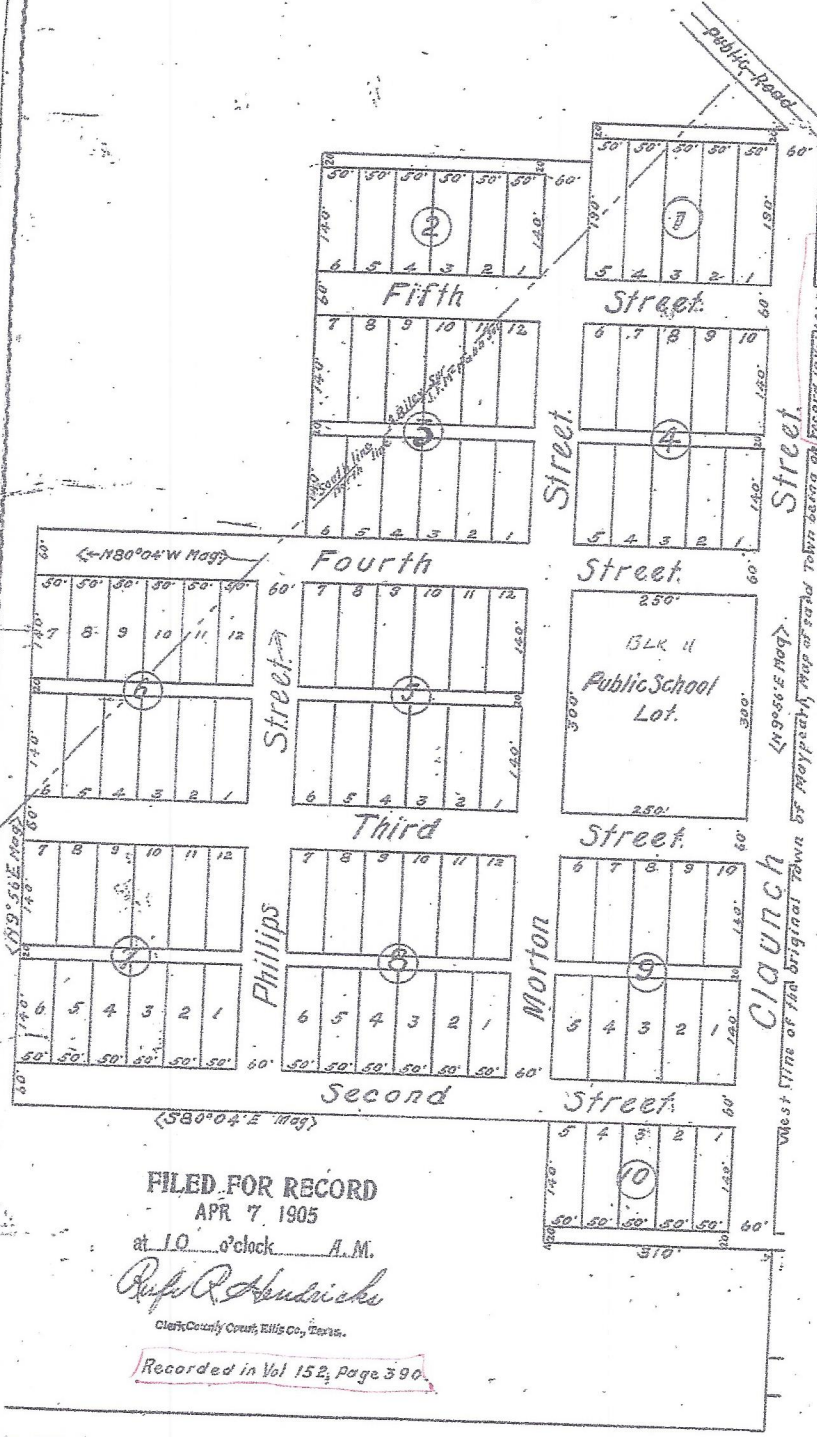


MAP OF J.P. CLAUNCH ADDITION TO MAYPEARL TEXAS

Scale 1 Inch = 150 Feet



Dedication - The Streets and Alleys shown on this Map are declared to be public highways, dedicated for public use and heretofore witnessed our hands this 5th day of April, A.D. 1905.

The State of Texas, Before me J.C. Lumpkins, a Notary Public in and for Ellis County Texas on this day personally appeared J.P. Claunch, a citizen of Ellis County Texas, and L.R. Claunch his wife, both known to me to be the persons whose names are subscribed to the foregoing instrument, and said J.P. Claunch having been examined by me, privily and apart from her husband and having the same fully explained to her, she has willingly signed the same with a view to retract it. Given under my hand and Seal of Office this 5th day of April, A.D. 1905.

J.P. Claunch
L.R. Claunch

Notary Public Ellis County Texas.

FILED FOR RECORD
 APR 7 1905
 at 10 o'clock A.M.
Rufus Q. Hendricks
 Clerk County Court, Ellis Co., Texas.
 Recorded in Vol 152, Page 390.